

# MONTHLY MEMBERSHIP PROGRESS REPORT

LOCATION ZIMBABWE

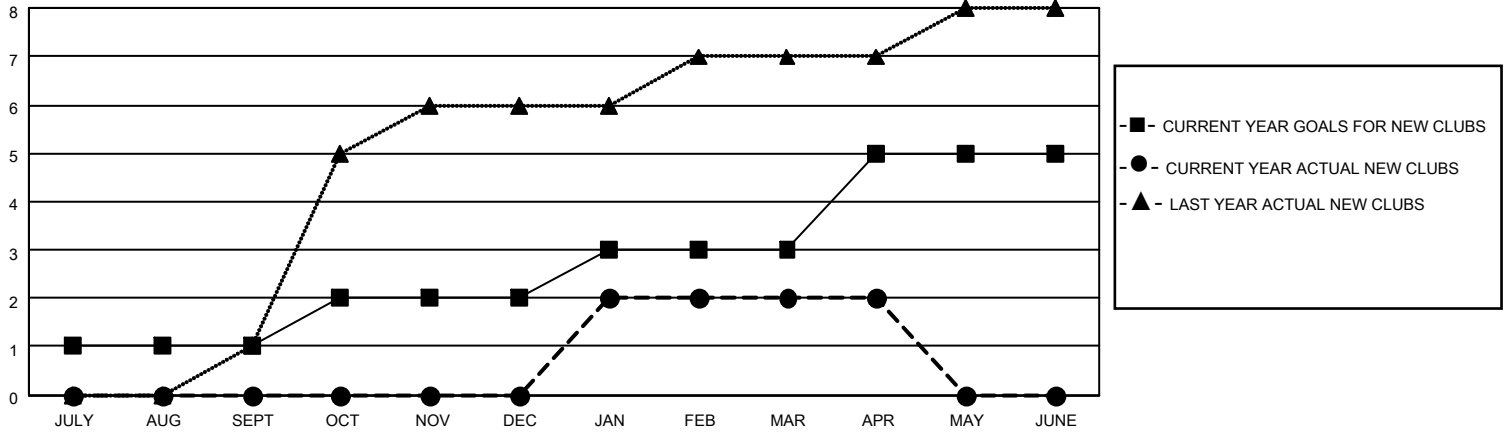
District 412 A

Results as of: 4/30/2023

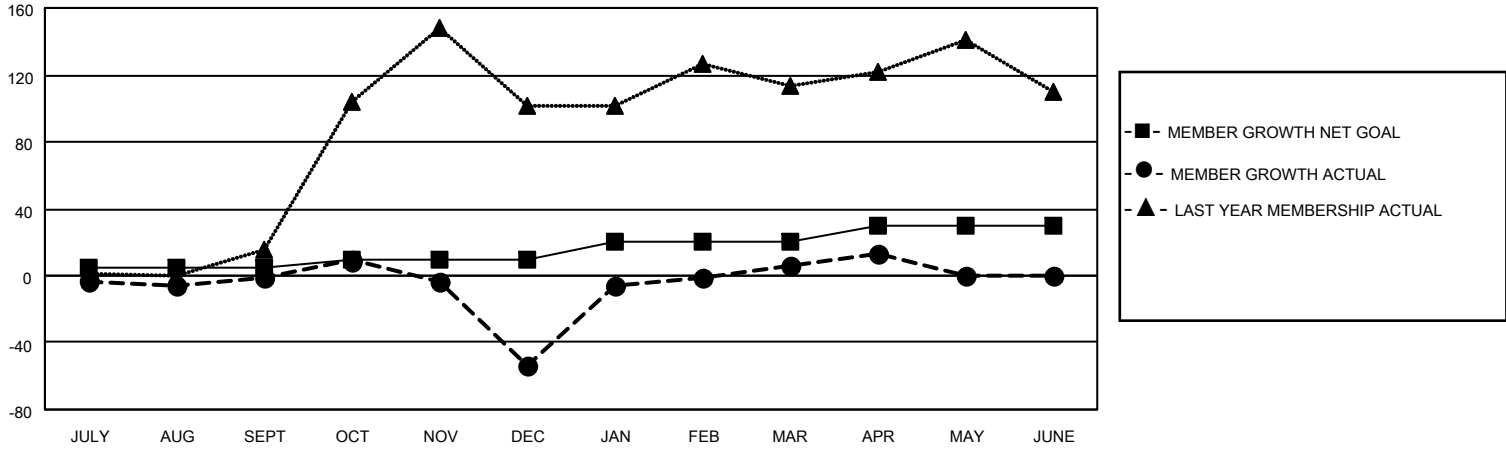
Clubs			
RESULTS FOR 2022-2023			
QUARTER	NEW CLUB GOAL	NEW CLUBS	DROPPED CLUBS
JULY/AUG/SEPT	1	0	0
OCT/NOV/DEC	1	0	0
JAN/FEB/MAR	1	2	0
APR/MAY/JUNE	2	0	0

Members			
RESULTS FOR 2022-2023			
QUARTER	MEMBER GROWTH NET GOAL	MEMBER GROWTH ACTUAL	DROPPED MEMBERS ACTUAL (including transfers)
JULY/AUG/SEPT	5	22	17
OCT/NOV/DEC	5	17	69
JAN/FEB/MAR	10	78	12
APR/MAY/JUNE	10	8	1

**GOALS AND ACTUAL NEW CLUBS CUMULATIVE**



**GOALS AND ACTUAL MEMBERS CUMULATIVE**



<b>DROPPED CLUBS: 0</b>	
<b>DROPPED MEMBERS</b>	
DECEASED	7
CLUB CANCELLED	0
OTHER	93
<b>TOTAL</b>	<b>100</b>

28 CLUBS OF 59 ADDED 1 OR MORE NEW MEMBERS

[CLICK HERE FOR CUMULATIVE MEMBERSHIP DATA](#)

<u>GENDER DISTRIBUTION</u>	
MALE	505 (46.25%)
FEMALE	587 (53.75%)
NON BINARY	0 (0.00%)
PREFER NOT TO ANSWER	0 (0.00%)
<b>TOTAL FAMILY UNIT MEMBERS</b>	<b>335</b>
<b>FAMILY MEMBERS PAYING HALF DUES</b>	<b>195</b>